

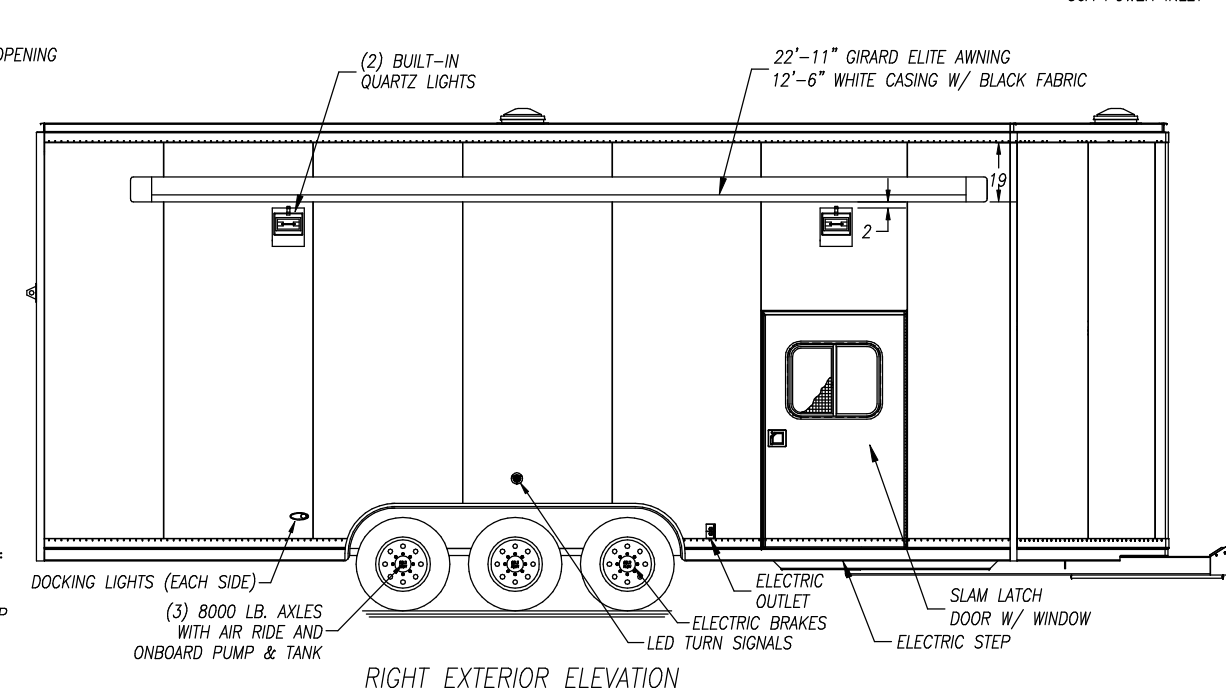
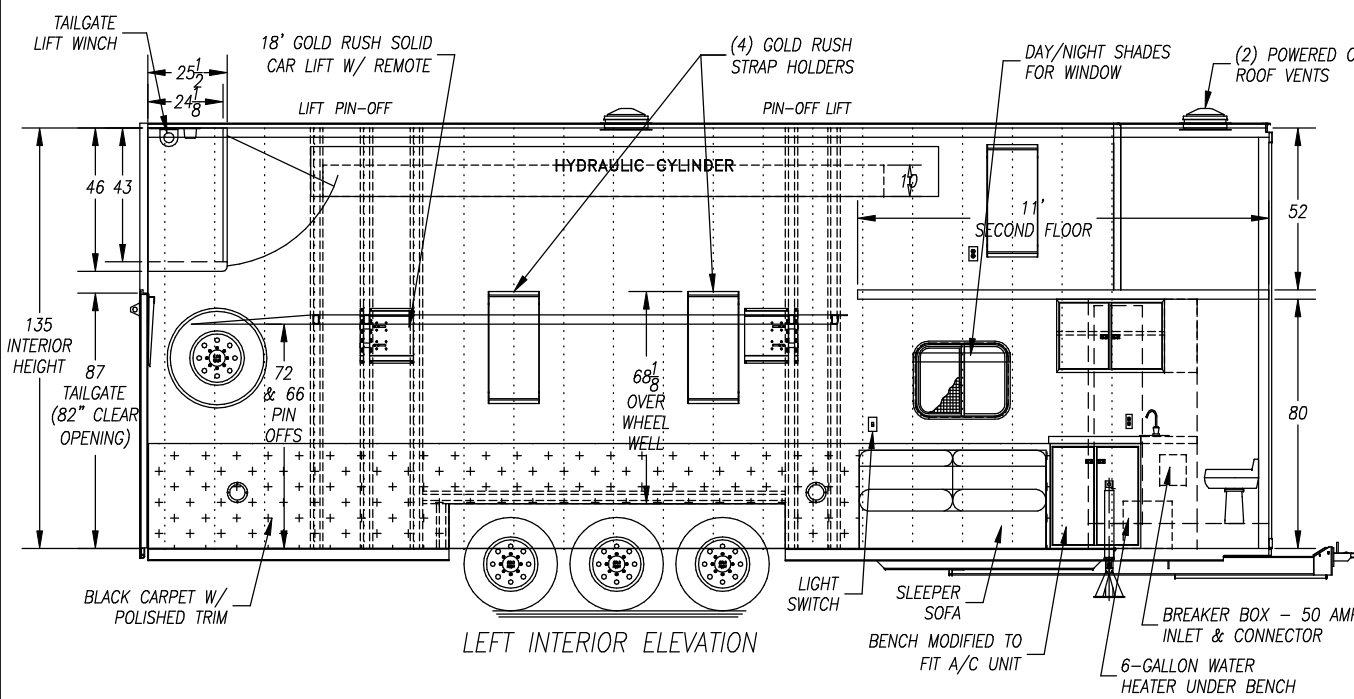
**STANDARD SPECIFICATIONS**

26' 9-9-8-3AX8

TRAILER TYPE: TAG-A-LONG

PACKAGE INCLUDES:

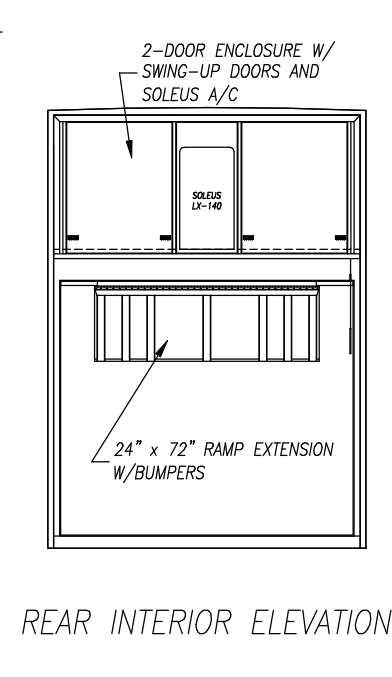
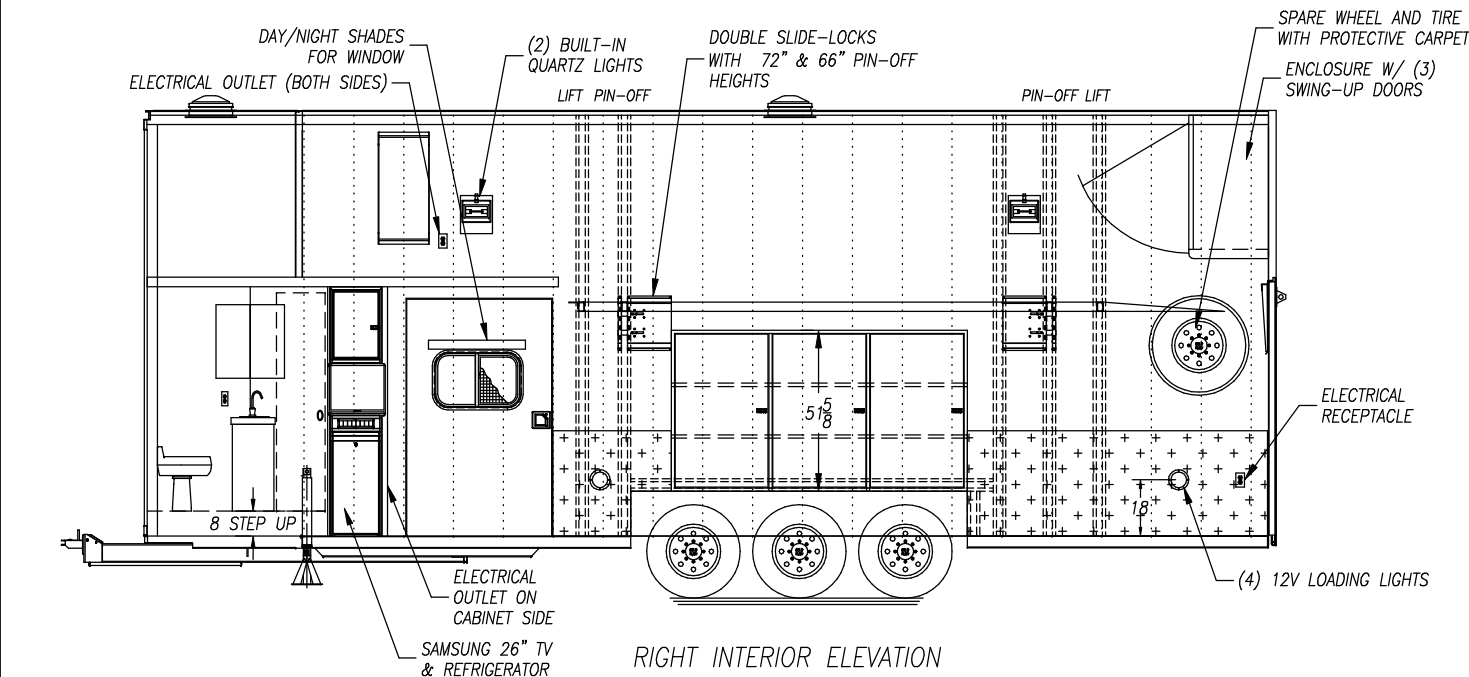
1. TAILGATE LIFT
2. (2) 12 VOLT LIGHTS
3. (4) TIE TOWN D-RINGS
4. BATTERY PACKAGE
5. SPARE MOUNT
6. SPARE WHEEL & TIRE
7. 17.5" ALCOA ALUM. WHEELS W/ 215/75R17.5 GOODYEAR H-RATED TIRES
8. RAIN GUTTER
9. CHARGING WIRE
10. BREAK AWAY SWITCH
11. BRITE TRIM
12. TAILGATE SEAL
13. CARPET CIRCLE FOR SPARE



**ITEMS NOT SHOWN**

1. PANEL AND INSULATE INTERIOR WITH BLUEBOARD INSULATION IN CEILING
2. FLAT PRONG RV-STYLE PLUG
3. SMOOTH SIDE (TAPED) - WHITE SKINS
4. BLACK COINED RUBBER FLOORING ON ALL FLOORS (37 FT.)
5. POLISH ALL EXTERIOR EXTRUSIONS
6. INSTALL SOLAR BATTERY CHARGER
7. INSTALL XANTREX 1000W INVERTER
8. CABLE & SATELLITE HOOKUPS FOR TV
9. PHANTOM SLIDING SCREEN DOOR
10. ITEMS YET TO BE LOCATED: ADDITIONAL LIGHT SWITCHES

PLEASE NOTE:  
DRAWING SHOWN AS A REFERENCE ONLY. ACTUAL DIMENSIONS AND DETAILS MAY VARY.



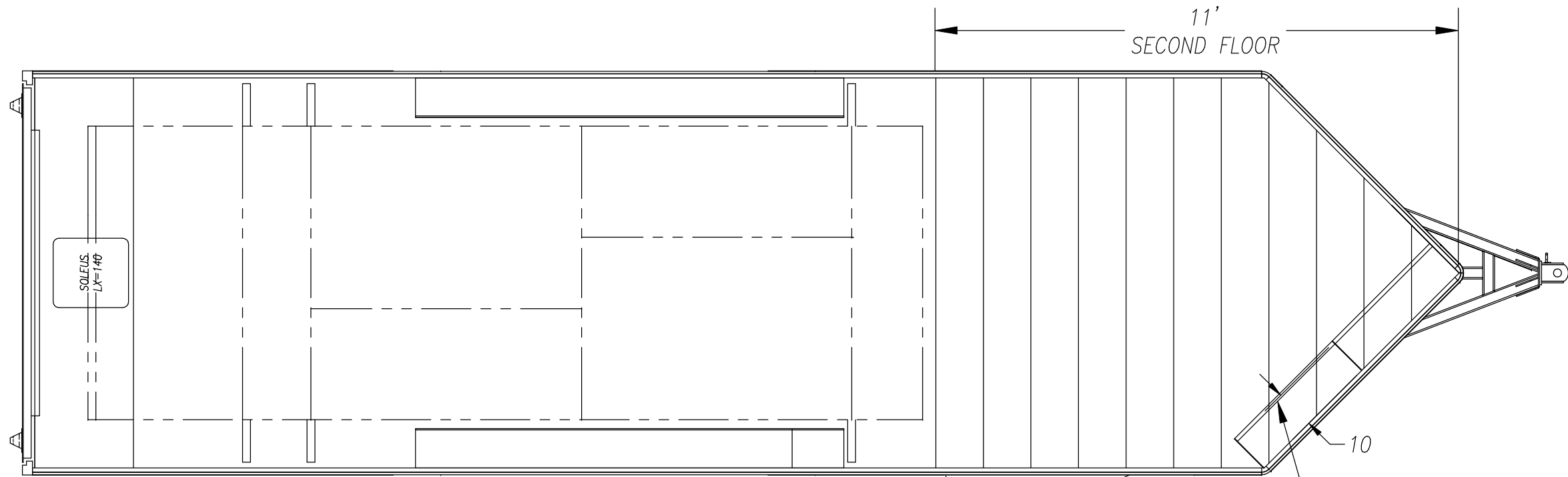
CUSTOMER APPROVAL:  
DATE: \_\_\_\_\_

REV	DESCRIPTION	DATE	APP'D
C	SKINS CHANGED TO WHITE W/ WHITE TAILGATE & AWNING BOX, SHOW STRAP HOLDERS, TV, A/C EXHAUST, FLUORESCENT BATHROOM LIGHT, ROOF VENTS, DOUBLE SLIDE LOCKS	05/17/10	GPG
B	135" HIGH, RECONFIGURED TRAILER	03/09/10	GPG
A	ADDED LOUNGE DETAILS, SUGGESTED FLOOR PLAN, MOVED DOORS TO FRONT OF TRAILER. CHANGED "ITEMS NOT SHOWN" NOTE ACCORDINGLY.	08/19/09	GPG

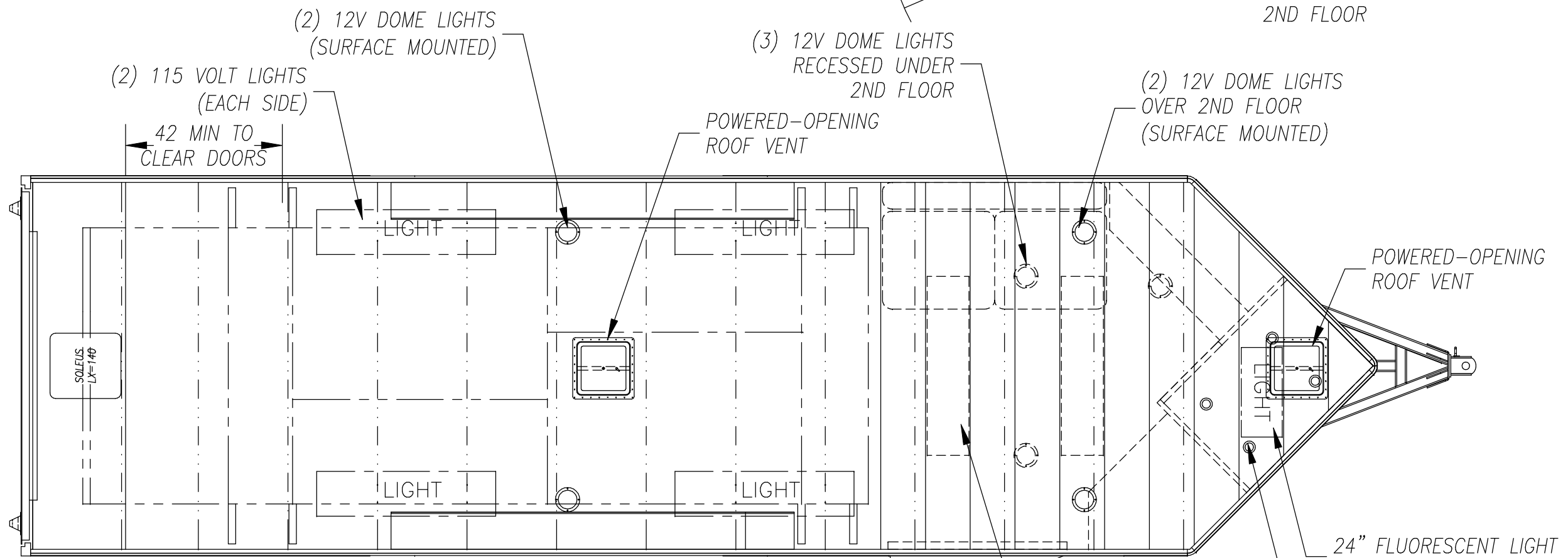
**GOLD RUSH, INC**  
920 Stone Hill Road  
Denver, Pa. 17517

DATE	SCALE	DRAWN BY:	GPG
11/23/09	NONE	APPROVED BY:	GPG
		<b>CAD</b>	
26'L X 135"H TAG-A-LONG			
LARRY JONES			
TRAILER #1569			

DO NO CHANGE MANUALLY



2ND FLOOR PLAN



ELECTRICAL PLAN